

The Western Architect

A NATIONAL JOURNAL OF ARCHITECTURE AND
ALLIED ARTS, PUBLISHED MONTHLY

VOLUME 16

JULY 1910

No. 1

The Western Architect

PUBLISHED MONTHLY AT MINNEAPOLIS, MINN.

BY

THE WESTERN ARCHITECT
(INCORPORATED)

American Institute of Architects

(ORGANIZED 1857)

OFFICERS FOR 1910:

PRESIDENT	IRVING K. POND, Chicago.
FIRST VICE-PRESIDENT	WALTER COOK, New York.
SECOND VICE-PRESIDENT	EDGAR V. SEELER, Philadelphia.
SECRETARY AND TREASURER	*GLENN BROWN, Washington, D. C.
AUDITORS	JAMES G. HILL, Washington, D. C. ROBERT STEAD, Washington, D. C.

BOARD OF DIRECTORS FOR 1910.

For Three Years—Cass Gilbert, New York; Ralph Adams Cram, Boston; John Galen Howard, San Francisco.

For Two Years — Frank C. Baldwin, Detroit, Mich.; *S. B. P. Trowbridge, New York, N. Y.; John M. Carrere, New York, N. Y.

For One Year — Frank Miles Day, Philadelphia; R. Clipston Sturgis, Boston, Mass.; George Cary, Buffalo, N. Y.

*Executive Committee

Architectural League of America

(ORGANIZED 1899)

PRESIDENT, FRANK C. BALDWIN, DETROIT, MICH.

PERMANENT SECRETARY, H. S. McALLISTER, WASHINGTON, D. C.

Arch'l Society of Washington U. of St. L.	Chicago Architectural Club.
Boston Architectural Club	St. Louis Architectural Club.
Gargoyle Society of Cornell U.	Washington Architectural Club.
George Washington U. Arch'l Club	Architect's Club, U. of Illinois.
T Square Club, Philadelphia.	Topiarian of Harvard.
Cleveland Architectural Club.	National Society of Mural Painters.
Toronto Architectural Club.	Detroit Architectural Club.
	Pittsburg Architectural Club.

STANDING COMMITTEES

Chairman—Education,	Newton A. Wells, Urbana, Ill.
Chairman—Publicity and Promotion,	Jesse V. Watson, St. Louis, Mo.
Chairman—University Fellowship,	Emil Lorch, Ann Arbor, Mich.
Chairman—Architectural Annual,	.L. C. Newhall, Boston, Mass.
Chairman—Traveling Scholarship,	Albert G. Skeel, Cleveland, O.

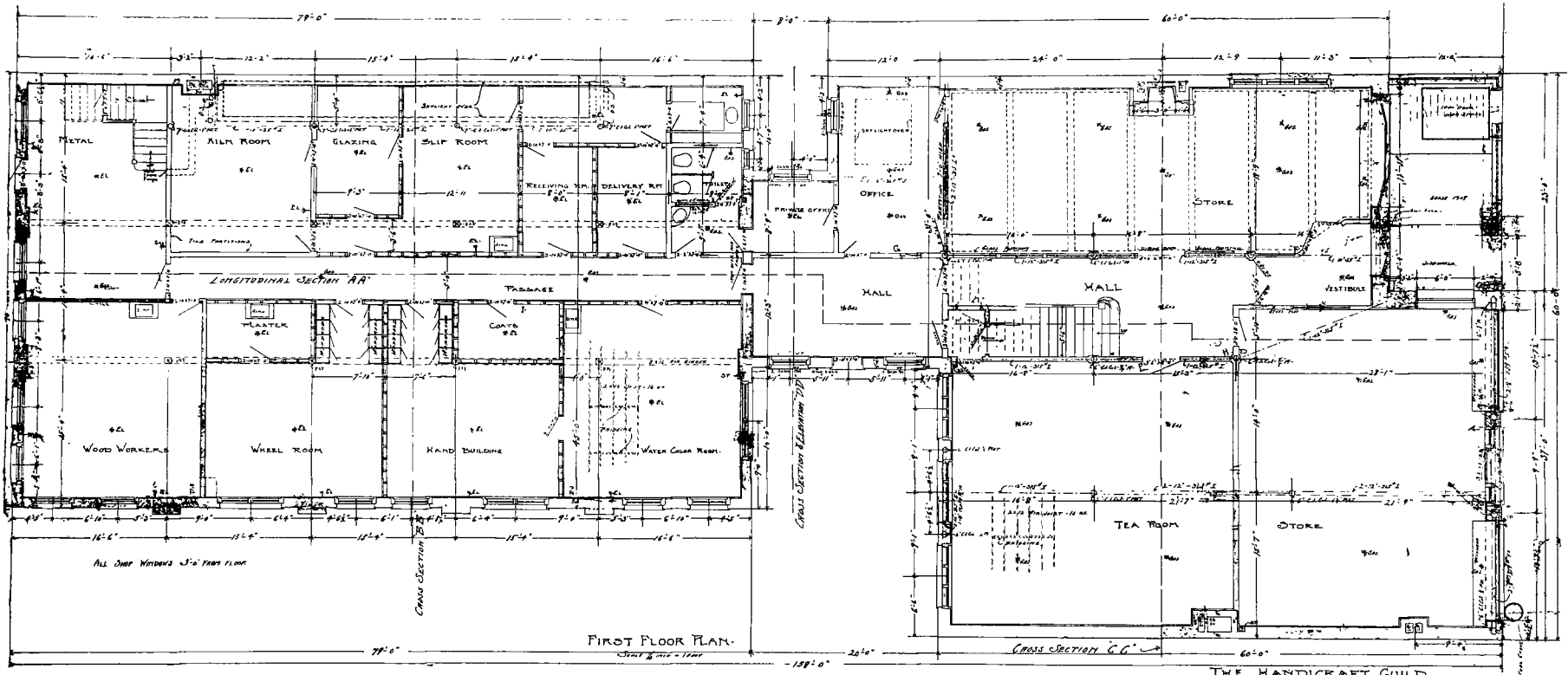
The Bungalow Grows

American architecture has been quick to avail itself of an Oriental device for household comfort coupled with reasonable economy; for the bungalow, if designed or adapted by Western sojourners in the East, has appealed to the sense of the practical in the West. This type of dwelling is an evidence, in its increasing use, of the more general appreciation of the fact that the season of summer in the United States, even in normally temperate latitudes, brings with it in frequent recurrence periods of tropical temperatures. Its course has run against the sun, for the bungalow first came into popularity in this country on the Pacific slope, and thence won its way speedily across the continent. Naturally enough, the original plan has undergone adjustment to meet environment. The increase in the suburban habit, following better facilities of local transportation, has multiplied these residences within the zones of cheap railway fares surrounding large cities. They are numbered by thousands, for example, in Long Island, and they are multiplying in the readily accessible environs of Boston, Philadelphia and Chicago. The bungalow appeals as much to the housewife as to the husband. It combines the privacy of the house with the step-saving conveniences of the apartment. Taste counts more than money in making the bungalow tasteful and economical, even though wealth may indulge in fanciful and costly variations. Among its peculiar attractions are counted broad verandas and the interior living room, which may be as lofty as the roof, with a surrounding gallery, giving access to bedrooms. Its popularity is an evidence of the potent influence of the American woman upon the art as well as upon the cost of living.

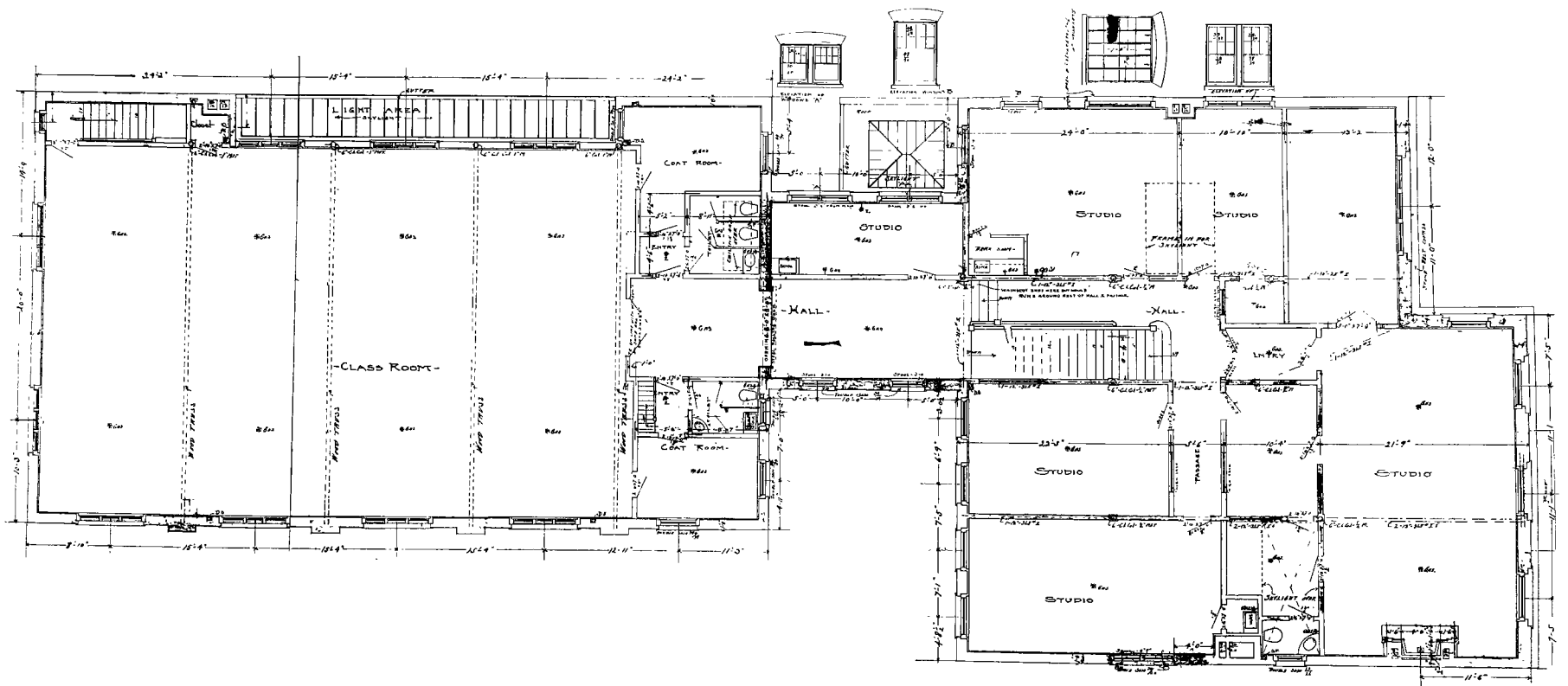
For The Cause of Architecture

Donn Barber, president of the Society of Beaux Arts Architects, announced this week a movement to raise a fund of \$250,000 to aid the educational committee of the society in cultivating and perpetuating the principles and associations of the Ecole des Beaux Arts, in Paris. About \$70,000 has been subscribed recently. An income of \$250,000 is needed.

Another splendid move on the part of those men, the members of the Society of Beaux Arts Architects who give their time and effort to this work simply for the good cause of architecture and the benefit of the young men who do not have the opportunity to go abroad to study and get the right preparation for active work. A committee of incorporation, who will or-



FIRST FLOOR PLAN
 THE HANDICRAFT GUILD, MINNEAPOLIS
 WILLIAM CHANNING WHITNEY, ARCHITECT



SECOND FLOOR PLAN
 THE HANDICRAFT GUILD, MINNEAPOLIS
 WILLIAM CHANNING WHITNEY, ARCHITECT



THE WESTERN ARCHITECT
JULY
1910

HANDICRAFT GUILD HOUSE, MINNEAPOLIS
WILLIAM CHANNING WHITNEY, ARCHITECT



ENTRANCE DETAIL



THE WESTERN ARCHITECT
JULY
1910

HANDICRAFT GUILD, MINNEAPOLIS
WILLIAM CHANNING WHITNEY, ARCHITECT